



HAWAII STITCHERY & FIBRE ARTS GUILD
 C/O KAREN KUBA-HORI
 45-439 OHAHA ST.
 KANEHOE, HAWAII 96744



Aloha - HSFAG is looking for Announcements, Advertising, and any other stuff that members would like to get the word out. Things we would consider: Exhibit announcements, member-owned stores wanting to list a sale or store hours, members looking to buy or sell for something . . . literally anything that would be of interest or benefit to our membership. Warning space is limited and is subject to review and editing. Send all requests to president@hsfag.com. Deadline for submission for the next issue: March 10, 2021.

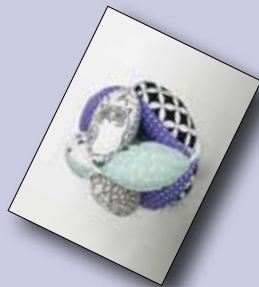
DATES TO REMEMBER

MEETINGS

FIRST WEDNESDAY OF EVERY MONTH
 VIRTUALLY VIA ZOOM UNTIL FURTHER
 NOTICE.

7 TO 8:30PM HSFAG
 GENERAL MEETING & PROGRAM

March 3, 2021
 Montessori Ball
 Aileen Chong



April 7, 2021
 “History of Lauhala & Making
 a Lauhala Lei”
 Nu‘u Atkins

... HSFAG 2021 BOARD ...

PRESIDENT - Alisa Au
president@hsfag.com

PAST PRESIDENT - Aileen Kaneshiro
aileenk@hawaii.rr.com

TREASURER/WEBSITE - Eileen Roether
hawaiianeil@hotmail.com

SECRETARY - Ednah Folk
mehndigirl@gmail.com

MEMBERSHIP - Jennie Tsue
jentsue@gmail.com

NEWSLETTER - Karen Kuba-Hori
kuba2351243@gmail.com

PROGRAMS/WORKSHOPS -
 Joy Nagae
joy@nagaue.com

Charlotte Szarmes
cszarmes@hawaii.rr.com

DIRECTORS AT LARGE
 Cynthia Oshiro
kamahinahaw@gmail.com
 Lei Batty
hsfagzooms@hsfag.com

No email?
 Call or Message Text
 Karen Kuba-Hori @ 808-389-6482



HAWAII STITCHERY & FIBRE ARTS GUILD

COVID-19 ISSUE X

FEBRUARY 2021

HSFAG....is still *ZOOMing*.....



A "Montessori Ball", or "Puzzle Ball" or "Amish Ball", is a wonderful learning toy for babies, toddlers and even older children. Fabric segments are sewn with openings that allow for babies to easily grab it and pass it hand-to-hand. The ball facilitates

hand-eye coordination with rolling, grasping, catching and throwing. The Montessori believed that children who are at liberty to choose and act freely would act spontaneously for optimal development. However, this simple developmental toy in the hands of a creative artisan, can become a work-of-art.

Aileen Chong will show us step-by-step how to create our own Montessori ball. An experienced crafter, Aileen started sewing from the 7th grade and hasn't stopped learning. Her talents include sewing, embroidery with floss and silk ribbon, sashiko, shibori, fabric beads, zentangle, blackwork, quilting, kumihimo, beading, tatting, quilling and so much more. Aileen has been married for over 50 years to her high school sweetheart. They have three children and five grandchildren.

On March 3rd (Japan's Girl's Day), Aileen has selected to demonstrate how to make a Montessori ball. A handmade fabric toy, when made, can become an art piece or a fun toy. Choice of fabrics can include a high contrast in colors and patterns as well as tactile stimulation (flannel, satin or textured).

The pattern, with instructions, will make a 6" Montessori ball. Both will be provided upon registration. Deadline to register is March 2nd, but do it early to receive the pattern. Contact Lei Batty at hsfagzooms@hsfag.com. Hope to see you there.

MARCH 3RD - 7PM

VIA ZOOM - GUESTS ARE WELCOME

MEET AILEEN CHONG

"LET'S MAKE A MONTESSORI BALL"



To enter ZOOM meeting, contact Lei Batty at hsfagzooms@hsfag.com by March 2nd.

Alisa's Message



HSFAG PRESIDENT ALISA AU
FEBRUARY 2021

Dear Guild Members,

Happy Heart Month! I hope you have had a chance to felt a heart. Please reach out if you need tips.

Please send pictures of your felted heart or any project you would like to share to Aileen K. at (808) 389-4995. She will post on our Instagram page. This is a nice way to share your work. Please check out HSFAG's Instagram page @hawaiiitcheryandfiberarts and follow us!

Looking forward to March and Aileen C. demonstrating the Montessori Ball. So fascinating and you can make it any size your heart desires. I know we will see some exciting examples of your creativity.

The Program Co-chairs Joy and Charlotte are always on the lookout for demonstrators. I continue to be amazed at the talents of our membership. As I look back at the past 10 years of presentations, I get wistful because I missed so much. We definitely build on past presentations, this is your Guild.

Anyone have any decluttering/organizing tips to share? Lei sorts and gives away a bag a week. Sounds like a challenge! I remember the annual October White Elephant sales we had which benefitted the Orpha Herrick Scholarship Fund. I definitely used to do more buying than clearing out.

Stay warm and see you on March 3rd!

Alisa

FYI ... FIBER ART NOW! If you are interested in seeing more work by various fiber arts, FIBER ART NOW! Has an Instagram page, @fiberartnow or on-line at fiberartnow.net. PREPARE TO BE IMPRESSED!

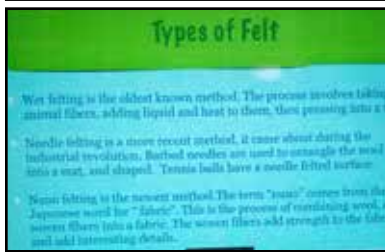
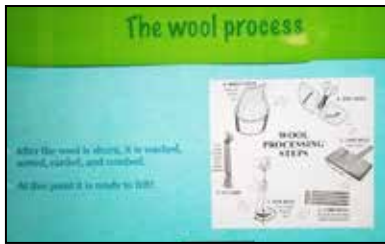
Need your help to update HSFAG's 2021 Membership Directory - 2nd notice

We are currently updating membership information. Please complete/mail the attached form. Towards the bottom of the form, you'll be asked to select the data you **DO NOT** want published.

Please respond **by March 15th**. If you have any questions, please email Jennie, Membership Chair, at jentsue@gmail.com

The Guild's membership directory is disseminated only to members for personal use. Link will appear as follows:

[2021 HSFAG Membership Directory Form](#)



Thank you Alisa.....



Valentine wishes to all



Meet your BOARD -- Alisa Au President



I joined HSFAG in 2010 after seeing an article in the newspaper about a workshop conducted by Donna Kato on working with polymer clay. When I called Sarah Chinen to sign up, she told me, if I joined HSFAG, the workshop AND membership would be \$25 LESS than just the workshop fee! Well, that's a BARGAIN, so, of course, I was in!

I LOVE what people sew, knit, crochet, and create. I have fantasies of making things like other people, however, I only dabble in sewing. Reading and baking are my passions.

In work, I focused on helping people find joy. It was so satisfying to see people's joy and find balance in life through creating.

Alisa



BORO-INSPIRED CHALLENGE

THIS appears to be THE year when we will be able to have our Boro-Inspired Challenge reveal and potluck--(or maybe bento dinner)! It is tentatively scheduled for October 2021.

Our newer members may be wondering what a Challenge is so here goes: HSFAG has been holding a creative challenge for the past few years in order to challenge our own personal selves to be creative and actually MAKE SOMETHING.

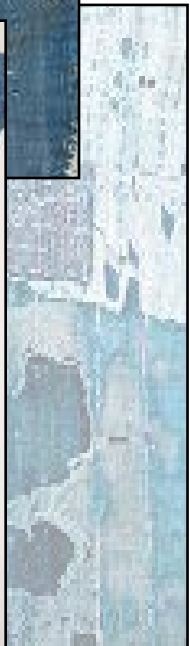
It is also a challenge with our fellow members since the creation that gets the most votes receives a \$100 prize! This year, a random \$100 prize will be given to a member for just submitting an original creation. Members usually vote on the theme of the Challenge at our annual Holiday Celebration in December. In the past, we have had a Bag Challenge, Necklace Challenge, Pillow Challenge, an Upcycle Challenge, and Mystery Bag Challenge. The current challenge is the Boro-Inspired Challenge.

To refresh our memories about what authentic boro is and the guidelines for the Boro-Inspired Challenge, here's a revised reprint of an article which was originally in our February 2020 newsletter.

Things you should know about Authentic Boro:

Source: Wikipedia

Boro are a class of Japanese textiles that have been mended or patched together. The term is derived from *boroboro*, meaning something tattered or repaired. As hemp was more widely available in Japan than cotton, they were often woven together for warmth. Cotton could not be cultivated in cold areas, especially the northernmost region of Aomori Prefecture. During the Edo period, fabrics made from silk and cotton were reserved for only a select portion of the upper class. Boro thus came to predominately signify clothing worn by the peasant farming classes who mended their garments with spare fabric scraps out of economic necessity. In many cases, the usage of boro garments would be handed down over generations, eventually resembling a patchwork after decades of mending... Boro also exemplifies the Japanese aesthetic of wabi sabi, in that the fabric reflects the beauty of natural wear and use.



The Boro-Inspired Challenge

Here's the criteria for those members who plan to enter the Challenge:

- Membership must be current (dues paid for 2020 or 2021)
- A refundable \$10 fee will be assessed.
- There is no minimum or maximum size entry
- A sewing machine can be used but there must be some hand-stitching in the entered piece.
- Although most authentic pieces were indigo-dyed, there is no color limitation
- The entry can be in more than one piece if they are a grouping such as a top and bottom
- The base piece doesn't necessarily need to be 100% made by the member. It could be an embellished piece of store-bought clothing, home décor, or a cigar box, etc.
- The fabric used doesn't have to be of Japanese origin nor does it require the use of "rags."
- The deadline for completion and submission of the boro-inspired piece is tentatively scheduled for October.

Submit your piece in a covered container such as a brown paper bag to Eileen Roether by 6:00 p.m. More details will follow as soon as we can confirm a month and location for our potluck.

Only those who paid their \$10 entry fee and have a submission will get their entry fee refunded. You can still commit to enter the Challenge by contacting Eileen Roether and sending in your \$10 entry fee.

The criteria are extremely broad in order to encourage member participation and creativity. Your member-peers will be voting on the piece they like the best so please make sure the entered piece makes your peers think of boro when they examine it. If you need ideas or guidance, try checking Pinterest or Instagram for other people's boro-inspired creations. Good Luck!

